
Wyoming County 2013 Budget

November 20, 2012

Presented by: Janis Cook, Budget Officer

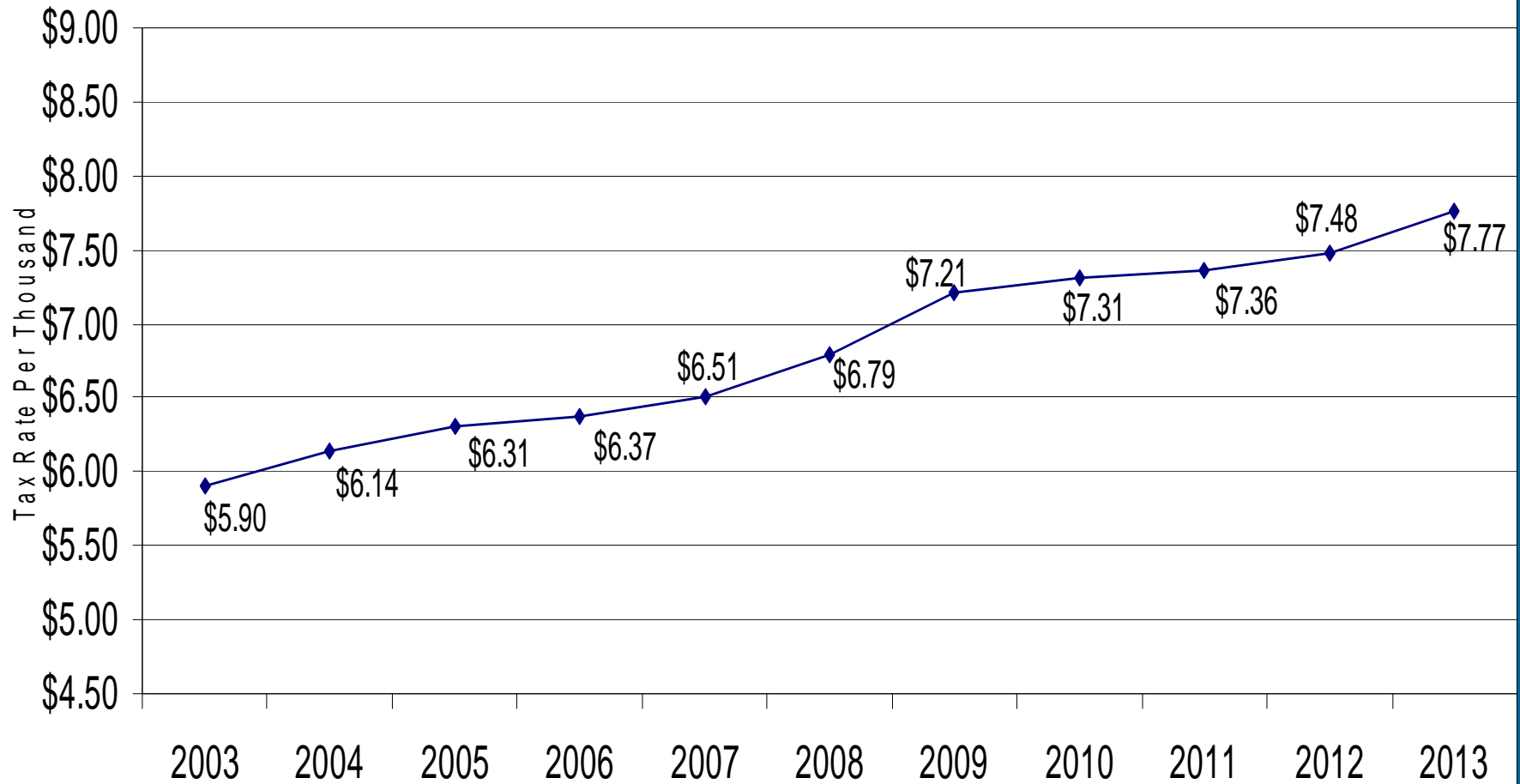
Summary of Proposed 2013 Budget

- Proposed budget - \$118.8m
- Proposed tax levy - \$15,944,092
 - An increase of \$759,396 or 5% or over 2012 Adopted tax levy
- Taxable Valuation - \$1,899,704,970
 - An increase of 1.23%
- Proposed tax rate @ 100% assessment - \$7.77 per thousand
 - An increase of \$.29 per thousand or 3.90%

2013 Property Tax Levy and Rate

	2012	2013	Amt / % change from prior yr
Property Tax Levy	\$ 15,184,695.27	\$ 15,944,091.73	\$ 759,396.46
Taxable Valuation	\$ 1,876,596,449	\$ 1,899,704,970	1.23%
Full Valuation	\$ 2,030,128,299	\$ 2,051,683,286	1.06%
Property Tax Rate (100%)	\$ 7.48	\$ 7.77	3.90%

Tax Rate 2003 - 2013



General County Levy	Adopted 2012	Tentative 2013	2013 Inc / (Dec)	2013 Percentage Inc / -Dec
Revenue	102,150,618.92	99,564,759.39	(2,585,859.53)	-2.53%
Expenses	121,181,314.19	118,816,542.12	(2,364,772.07)	-1.95%
Reserve to offset	3,846,000.00	3,307,691.00	(538,309.00)	-14.00%
Total General County Levy	15,184,695.27	15,944,091.73	759,396.46	5.00%
Special District Levy				
Board of Elections	20,583.00	21,054.00	471.00	2.29%
Recycling	1,389,375.00	1,392,300.00	2,925.00	0.21%
Worker's Comp	466,488.00	496,369.00	29,881.00	6.41%
Total Levy All Districts	17,061,141.27	17,853,814.73	792,673.46	4.65%
NYS Tax Levy Limitation		17,466,994.02	405,852.75	2.38%
Over / (Under) Allowable Cap		386,820.71	386,820.71	

General Fund Recap

General Fund Only		Adopted 2012	Tentative 2013	Change Amount Inc / (Decrease)
Total Revenues		37,436,483.47	37,900,166.45	463,682.98
.1	Personal Svc	13,449,841.03	13,386,797.28	(63,043.75)
.2	Capital	150,036.00	208,527.70	58,491.70
.4	Contractual	28,250,449.72	27,929,169.70	(321,280.02)
.6	Principal Pmt	670,000.00	711,000.00	41,000.00
.7	Interest Pmt	477,449.28	437,781.78	(39,667.50)
.8	Fringe	7,517,046.18	7,972,736.44	455,690.26
.9	Transfers	4,806,356.53	5,598,245.28	791,888.75
Total Expenditures		55,321,178.74	56,244,258.18	923,079.44
Fund Balance		(2,700,000.00)	(2,400,000.00)	300,000.00
Levy		15,184,695.27	15,944,091.73	759,396.46

Highway & Machinery Fund Recap

Highway & Machinery Fund Only		Adopted 2012	Tentative 2013	Change Amount Inc / (Decrease)
Total Revenues		11,056,175.85	9,239,982.00	(1,816,193.85)
.1	Personal Svc	1,263,975.00	1,286,205.00	22,230.00
.2	Capital	0.00	56,852.00	56,852.00
.4	Contractual	10,079,152.00	7,756,379.00	(2,322,773.00)
.6	Principal Pmt	0.00	150,000.00	150,000.00
.7	Interest Pmt	0.00	4,140.00	4,140.00
.8	Fringe	859,048.85	894,097.00	35,048.15
.9	Transfers	0.00	0.00	0.00
Total Expenditures		12,202,175.85	10,147,673.00	(2,054,502.85)
Fund Balance		(1,146,000.00)	(907,691.00)	238,309.00
Levy		0.00	0.00	0.00

Hospital Fund Recap

Hospital Fund Only		Adopted 2012	Tentative 2013	Change Amount Inc / (Decrease)
Total Revenues		50,673,524.60	49,334,731.94	(1,338,792.66)
.1	Personal Svc	20,650,000.00	19,432,745.00	(1,217,255.00)
.2	Capital	300,000.00	750,000.00	450,000.00
.4	Contractual	17,082,725.00	16,940,700.00	(142,025.00)
.6	Principal Pmt	1,009,000.00	866,000.00	(143,000.00)
.7	Interest Pmt	683,474.60	768,838.94	85,364.34
.8	Fringe	10,948,325.00	10,576,448.00	(371,877.00)
.9	Transfers	0.00	0.00	0.00
Total Expenditures		50,673,524.60	49,334,731.94	(1,338,792.66)
Fund Balance		0.00	0.00	0.00
Levy		0.00	0.00	0.00

Property Tax Cap Calculation

2012 Tax Levy	15,184,695.27
+ Special District Levy	<u>1,876,446.00</u>
2012 Total Adjusted Tax Levy	17,061,141.27
x Tax Base Growth Factor (Provided by NYS)	<u>1.0042</u>
	17,132,798.06
+ PILOTS in 2012 (est.)	<u>227,000.00</u>
	17,359,798.06
x Allowable Levy Growth (2%)	<u>1.02</u>
	17,706,994.02
- PILOTS in 2013 (est.)	<u>240,000.00</u>
ESTIMATED TOTAL TAX CAP	17,466,994.02
Amount Allowed to Increase Tax Levy	405,852.75 2.38%

NINE STATE MANDATES

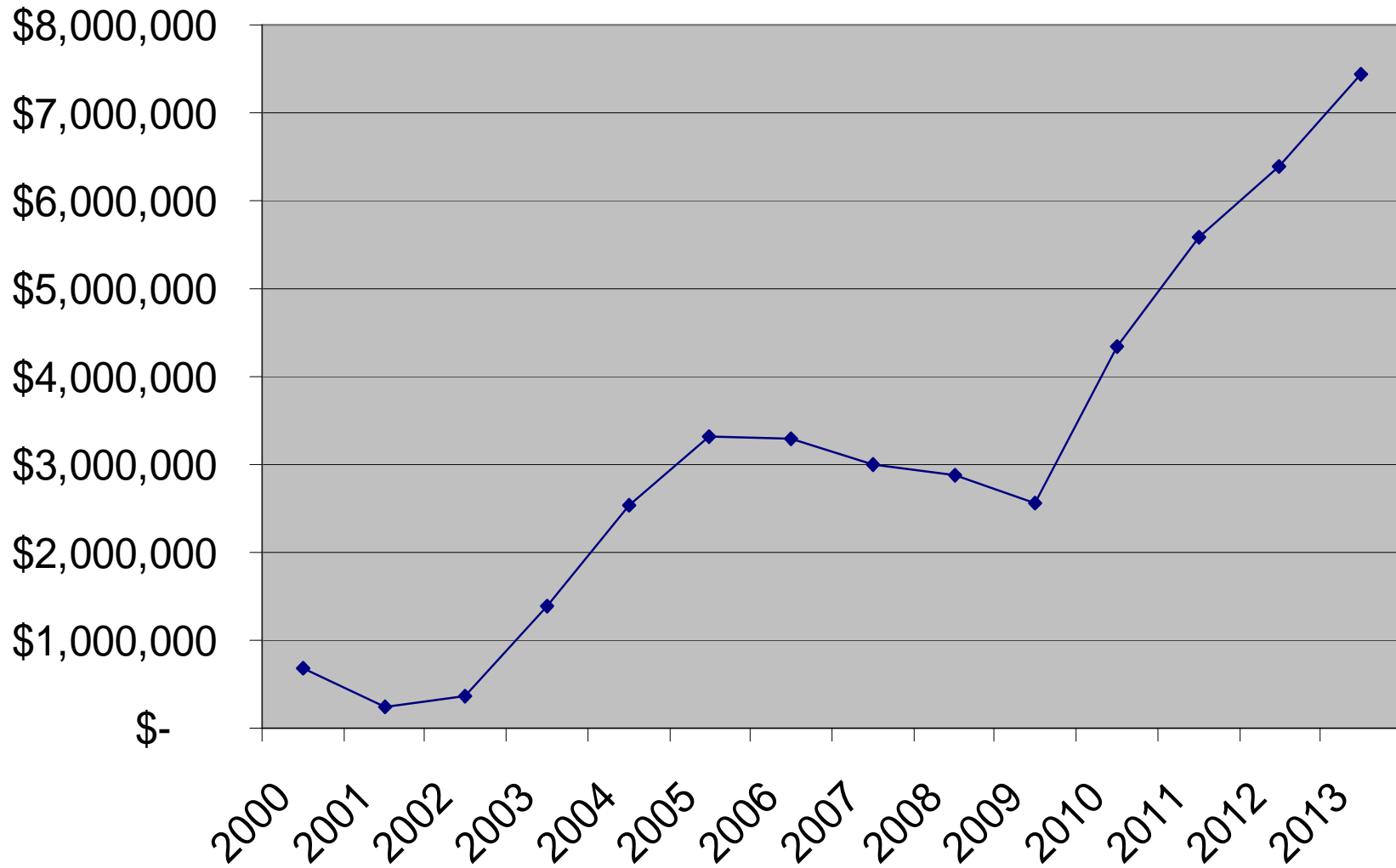
Currently these 9 mandates take up 118% of our County Tax Levy!!!!

Mandates	2012 Adopted	2013 Budget	Levy Increase
Medicaid (inc. IGT)*	6,895,900.00	7,093,303.00	197,403.00
All other mandated DSS Programs**	2,047,081.00	2,291,398.00	244,317.00
NYS Retirement Contribution	6,976,458.00	7,308,457.00	331,999.00
Probation	468,402.38	455,672.67	(12,729.71)
Indigent Defense	336,416.29	359,036.17	22,619.88
Special Ed Pre-K	1,050,489.64	1,051,189.17	699.53
Early Intervention	282,251.23	202,376.50	(79,874.73)
Total Levy Increase	18,056,998.54	18,761,432.51	704,433.97
Allowable Levy Increase			405,852.75

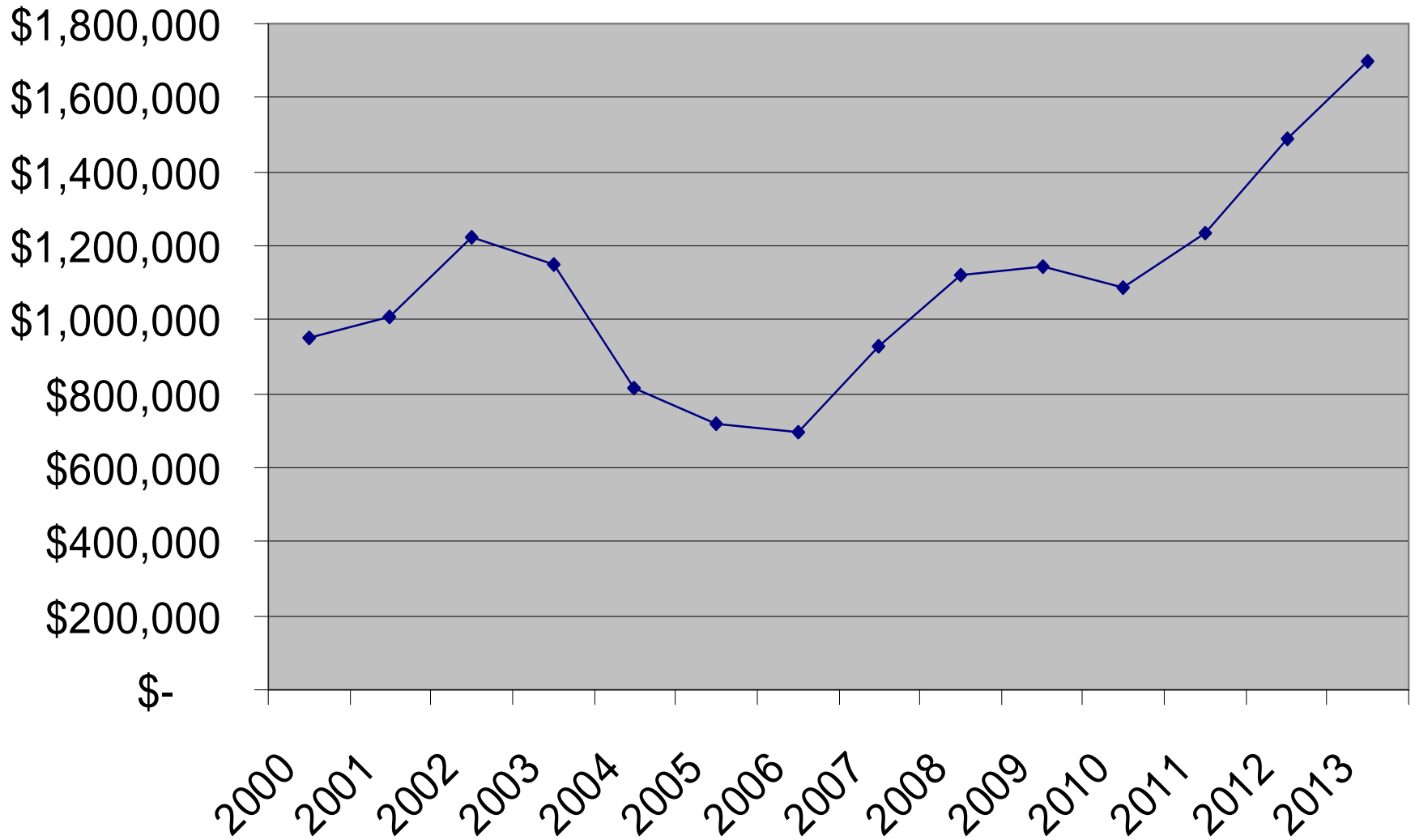
*The Medicaid Levy for both years includes a budgeted \$1.5 M local share of estimated IGT funding.

**Public Assistance, Safety Net, Child Welfare

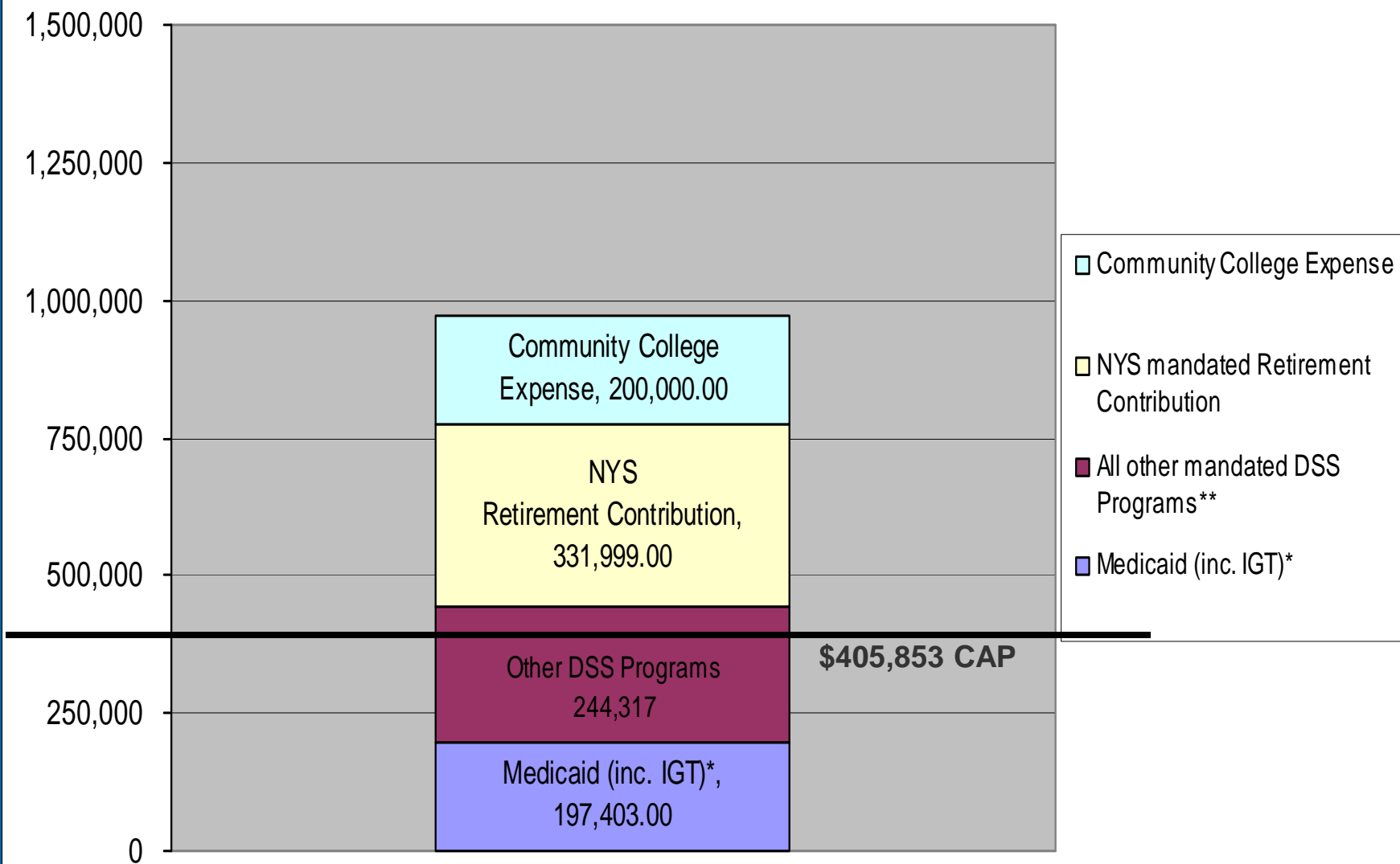
NYS Retirement Expense History



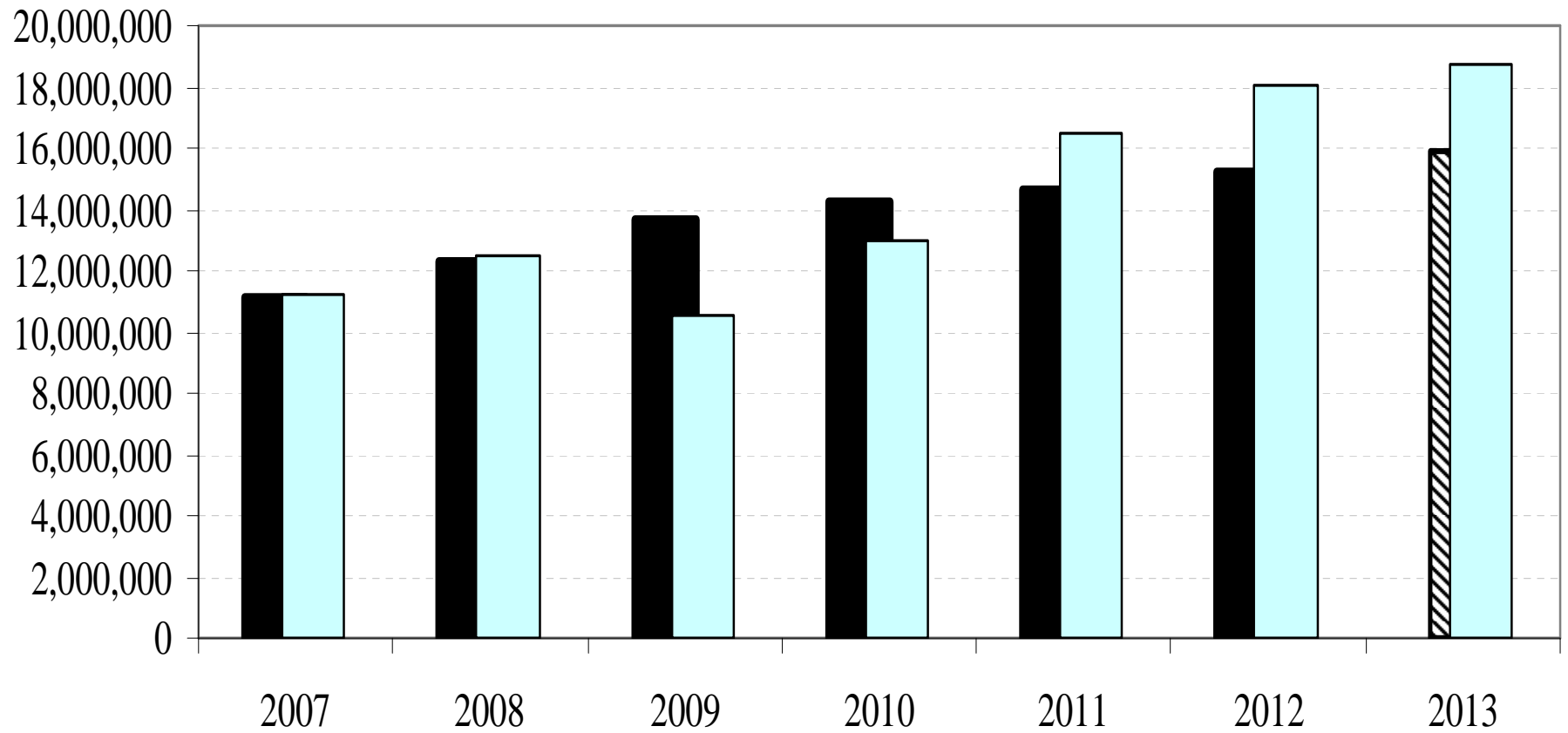
Community College Expense History



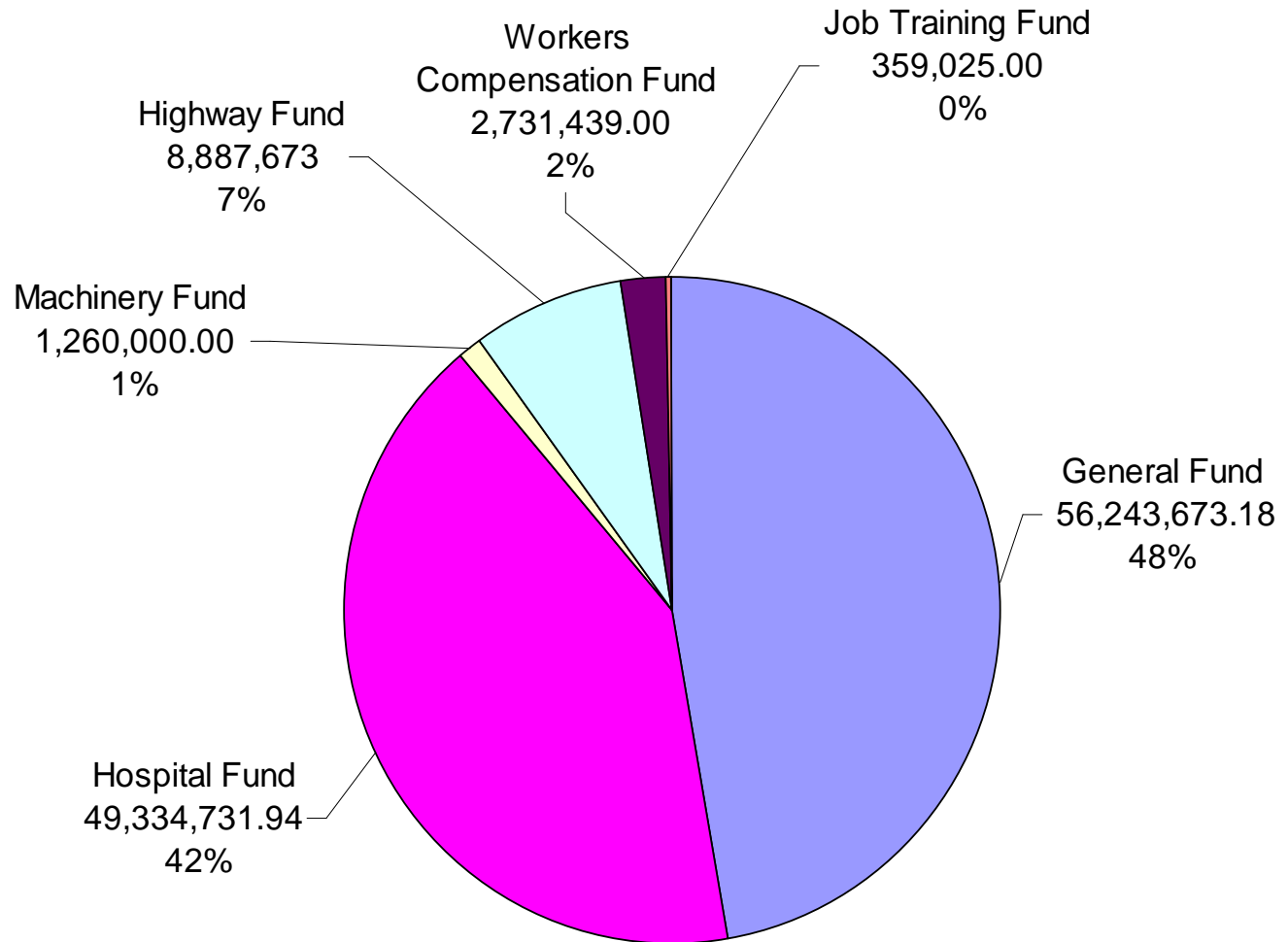
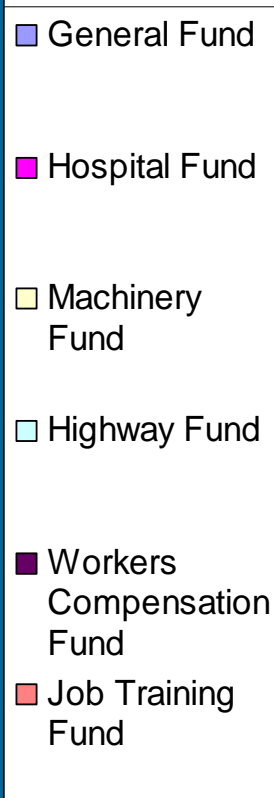
2013 Levy Increases



Real Property Tax Levy



Appropriation Summary Expenditures By Fund - 2013

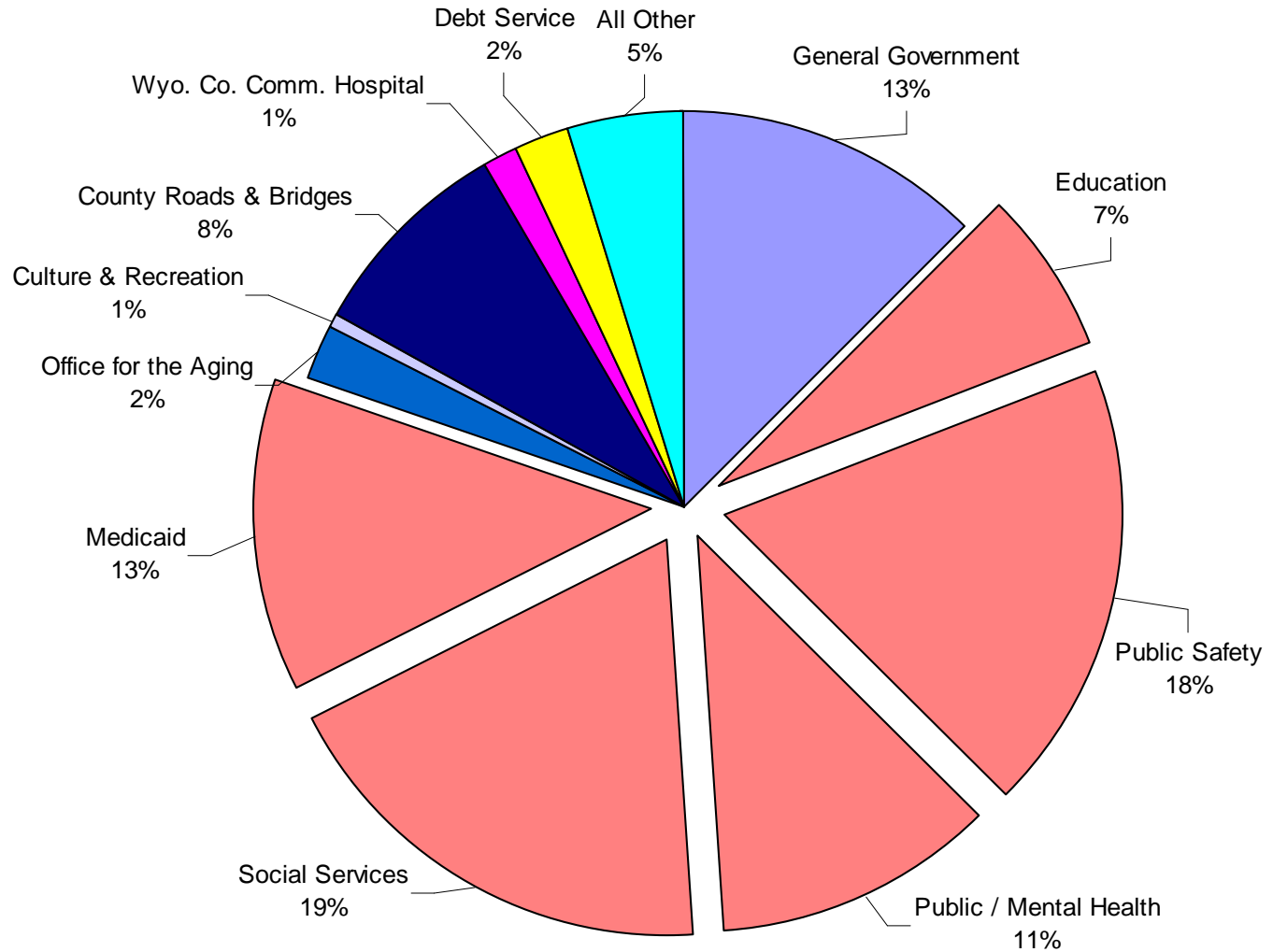


SUMMARY OF 2013 BUDGET BY FUNCTION

FUNCTION	APPROPRIATIONS	STATE & FEDERAL AID	REVENUES	TAX LEVY / (SURPLUS)	% OF TAX LEVY/ SURPLUS
General Governmental Support	\$0.00	\$0.00	\$16,339,711.00	(\$16,339,711.00)	-84.9%
Legislative	\$696,821.44	\$0.00	\$33,500.00	\$663,321.44	3.5%
Judicial	\$1,197,931.80	\$464,552.00	\$70,530.00	\$662,849.80	3.4%
Finance	\$984,207.60	\$0.00	\$704,555.00	\$279,652.60	1.5%
Staff	\$3,554,083.50	\$168,009.00	\$1,558,286.51	\$1,827,787.99	9.5%
Special Items	\$631,815.00	\$0.00	\$0.00	\$631,815.00	3.3%
Education	\$3,746,189.17	\$995,000.00	\$0.00	\$2,751,189.17	14.3%
Public Safety	\$10,283,283.83	\$467,794.39	\$1,034,708.36	\$8,780,781.08	45.6%
Health	\$6,358,667.84	\$3,662,597.67	\$1,794,193.20	\$901,876.97	4.7%
Social Services (Less Medicaid)	\$10,563,735.75	\$6,755,680.00	\$886,000.00	\$2,922,055.75	15.2%
Social Services (Medicaid / MMIS)	\$7,093,303.00	\$0.00	\$0.00	\$7,093,303.00	36.8%
Economic Development	\$499,414.00	\$0.00	\$2,500.00	\$496,914.00	2.6%
Other	\$155,925.64	\$11,654.00	\$0.00	\$144,271.64	0.8%
Economic Assistance	\$1,309,212.00	\$726,699.00	\$126,410.00	\$456,103.00	2.4%
Recreation	\$180,483.25	\$33,425.00	\$8,725.00	\$138,333.25	0.7%
Culture	\$81,788.65	\$0.00	\$3,880.00	\$77,908.65	0.4%
Adult Recreation	\$95,000.00	\$95,000.00	\$0.00	\$0.00	0.0%
General Environment	\$1,525,595.00	\$0.00	\$1,487,363.00	\$38,232.00	0.2%
Natural Resources	\$534,188.65	\$0.00	\$0.00	\$534,188.65	2.8%
Employee Benefits	\$5,000.00	\$0.00	\$5,000.00	\$0.00	0.0%
Debt Service	\$1,148,781.78	\$63,808.32	\$400,000.00	\$684,973.46	3.6%
Interfund Transfers - County Road	\$4,753,605.00	\$0.00	\$0.00	\$4,753,605.00	24.7%
Interfund Transfers - Hospital	\$834,364.28	\$0.00	\$0.00	\$834,364.28	4.3%
Interfund Transfers - Workers Comp	\$10,276.00	\$0.00	\$0.00	\$10,276.00	0.1%
Highway Funds	\$10,147,673.00	\$3,134,077.00	\$6,105,905.00	\$907,691.00	4.7%
Hospital Funds	\$49,334,731.94	\$177,150.66	\$49,157,581.28	\$0.00	0.0%
JTPA Funds	\$359,025.00	\$359,025.00	\$0.00	\$0.00	0.0%
Compensation	\$2,731,439.00	\$0.00	\$2,731,439.00	\$0.00	0.0%
Risk Retention Fund	\$0.00	\$0.00	\$0.00	\$0.00	0.0%
Capital	\$0.00	\$0.00	\$0.00	\$0.00	0.0%
TOTALS:	\$118,816,542.12	\$17,114,472.04	\$82,450,287.35	\$19,251,782.73	100.0%
Less Surplus:					
General Fund				\$2,400,000.00	
Machinery Fund				\$0.00	
County Road Fund				\$907,691.00	
Compensation				\$0.00	
Capital					
Subtotal Surplus Applied				\$3,307,691.00	
TAX LEVY:				\$15,944,091.73	

Appropriation Summary General Fund Expenditures - 2013

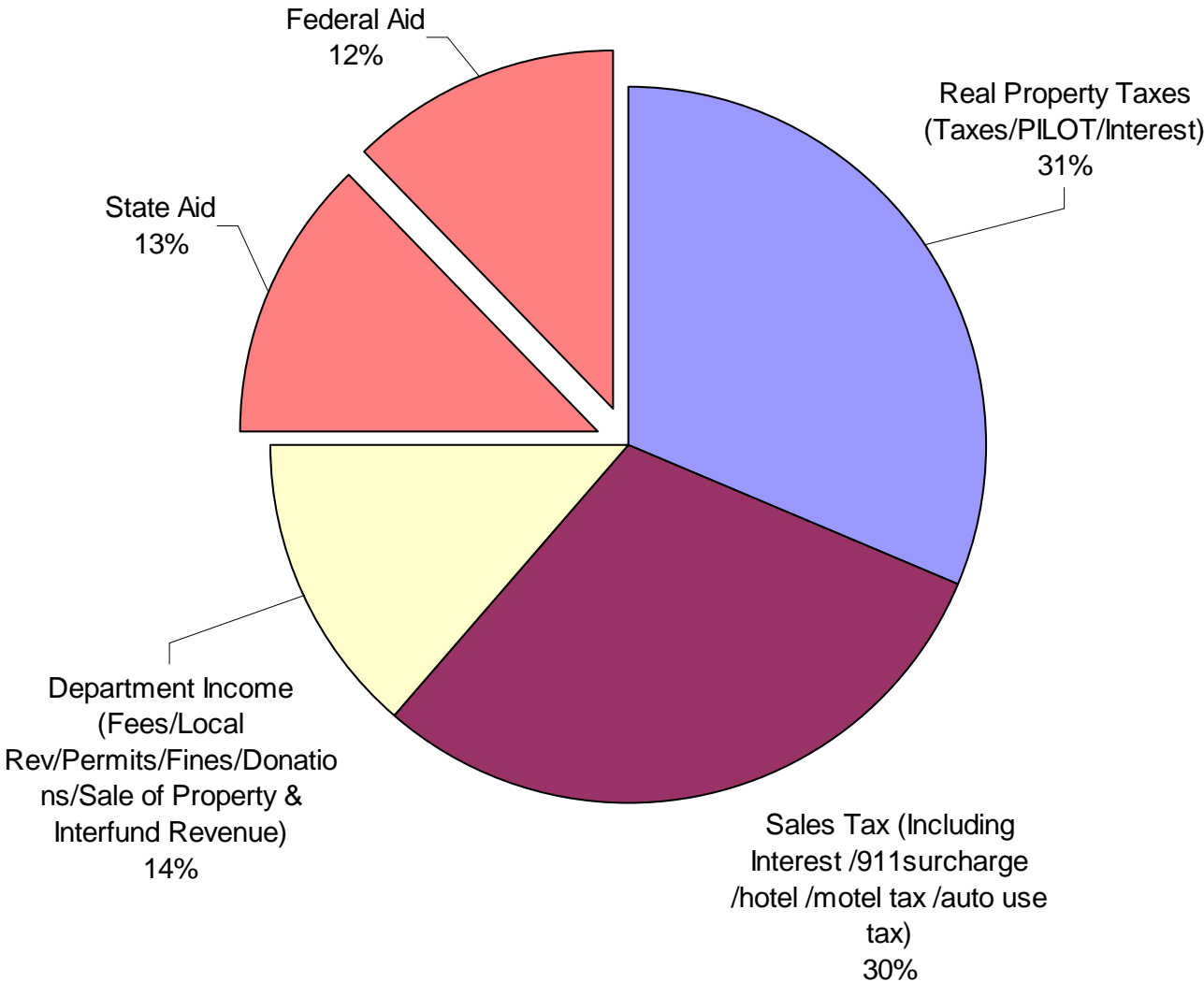
- General Government
- Education
- Public Safety
- Public / Mental Health
- Social Services
- Medicaid
- Office for the Aging
- Culture & Recreation
- County Roads & Bridges
- Wyo. Co. Comm. Hospital
- Debt Service
- All Other



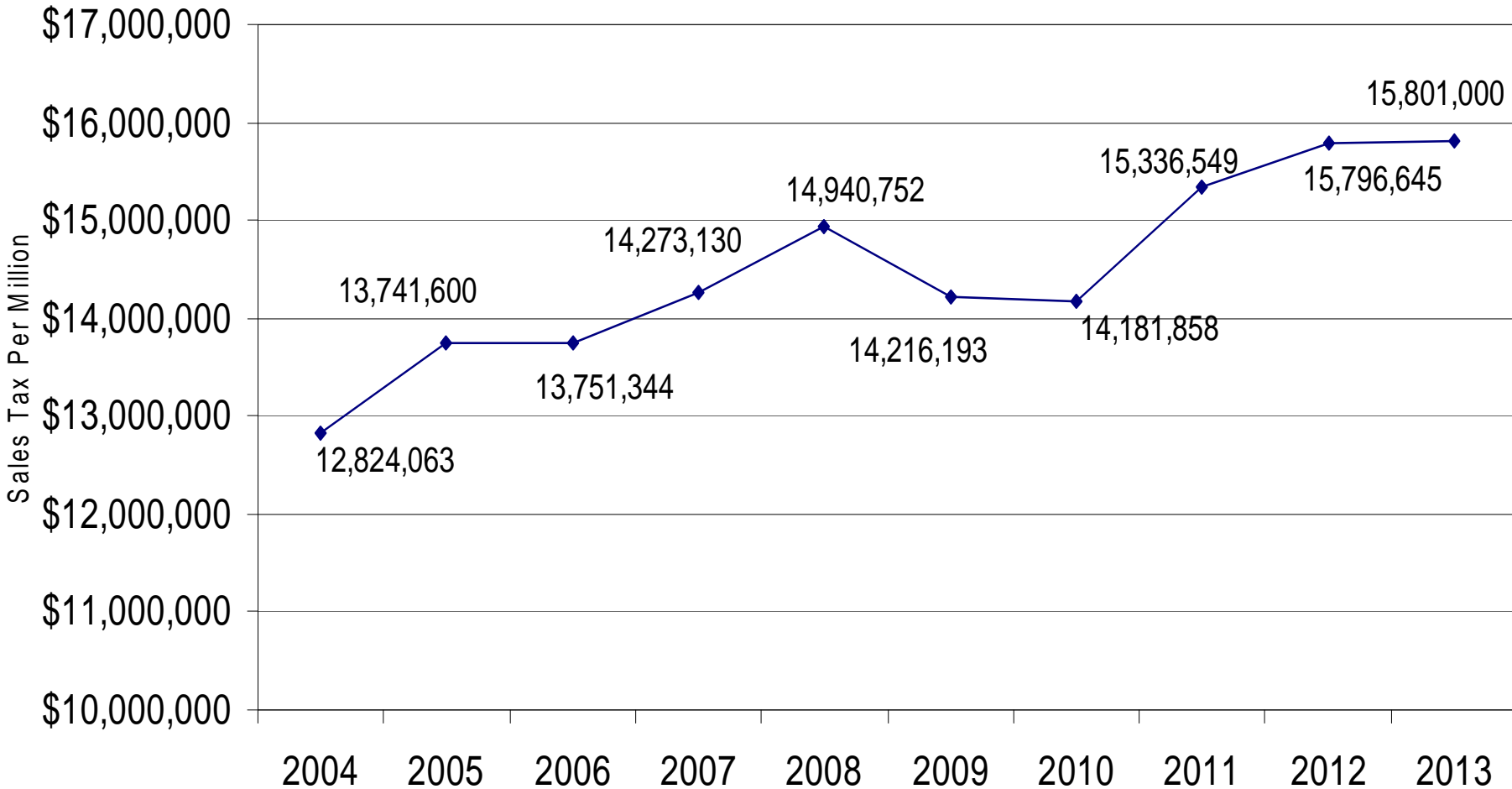
Revenue Summary

General Fund Revenue By Source - 2013

- Real Property Taxes (Taxes/PILOT/Interest)
- Sales Tax (Including Interest /911surcharge /hotel /motel tax /auto use tax)
- Department Income (Fees/Local Rev/Permits/Fines/Donations/Sale of Property & Interfund Revenue)
- State Aid
- Federal Aid



Sales Tax w/ assoc. Interest 2004 - 2013 Projection



Recap of Actions taken in 2012 to comply with the NYS Tax Cap Law

- Provided no salary increases or new positions
- Cut two full time positions
- Reduced or eliminated partner agency contracts
- Eliminated Grant Writing assistance to Villages and Towns
- Discontinued the Better Pavement Program
- Scaled back the Health System renovation project
- Eliminated the Sheriff Posse allocation

Initiatives taken to improve efficiency and services to the residents of Wyoming County

- Complete the sale of the Wyoming County Health Department Certified Home Health Agency to the Visiting Nursing Association of Western New York.
- Oversee the reconstruction and renovation of the County Nursing Home and Hospital.

- Complete an affiliation agreement between the Wyoming County Community Hospital and Strong Memorial Hospital.
- Work with towns and villages implementing a Local Government Efficiency Shared Services Grant to form a County Water Resource Agency.
- Assist in the development of the Wyoming County Agriculture and Business Center for Excellence.

Contract Agencies	2013 Allocation
Mercy Flight	\$8,100.00
Wyoming County Chamber of Commerce (Tourism)	\$125,555.00
Wyoming County Business Education Council	\$5,400.00
Wyoming County Business Center	\$112,050.00
Wyoming County Arts Council	\$14,290.00
Wyoming County Wildlife Federation	\$1,130.40
Wyoming County Soil and Water	\$160,162.60
Cornell Cooperative Extension	\$333,395.00
Wyoming County Fair Association	\$22,500.00
Total Budgeted Expenditures	782,583.00
Percentage of Total Levy:	4.91%

Mandate Relief from Albany?

Please contact your local representatives to request mandate relief so that Wyoming County can continue to focus on the priorities that make our county great.

Starting With:

NYS Governor

**Hon. Andrew M. Cuomo
Executive Chambers
State Capitol Building
Albany, NY 12224
(518) 474-8390**

Contact Information:

- NYS Senator (59th District)
Hon. Patrick M. Gallivan
947 Legislative Office Building
Albany, NY 12247
(518) 455-3471
- NYS Assemblyman (147th District)
Assemblyman Elect
Hon. David DiPietro
Legislative Office Building
Albany, NY 12248
- 4729 Transit Road, Suite 7
Depew, NY 14043
(716)656-8544

Thank You!

- **If you have any questions please feel free to contact me at:**

Janis Cook

Wyoming County Budget Officer

Phone: (585) 786-8804

JCook@wyomingco.net

- **Your Town Supervisor**